

# Envirotruck

## Collection

Designed for both waste and storage solutions



Envirotruck is a range of four, sturdy, wheeled or static, waste recycling or storage units.

- Strong, sturdy, design. Wipe clean surface.
- Choice of 'wheeled', 'pallet feet' or 'flat base' versions.
- WRAP compliant recycling graphics reducing, waste stream, cross contamination.
- 'Easy grab' edge lip helps lifting and handling.
- 100, 145, 305, & 332 litre capacities available.
- Choice of colours available.

100 litre



584 x 450 x 685 mm

145 litre



800 x 450 x 685 mm

305 litre



990 x 686 x 762 mm

332 litre



1219 x 610 x 835 mm

## Base Options

The following base options are available:



Flat Base  
(All versions)



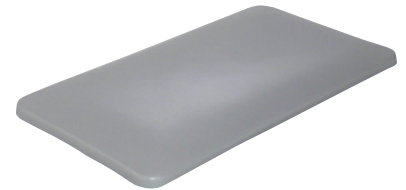
Casters  
(All versions)



Pallet Feet  
(305L & 332L only)

## Lids

Lids are available (not 332L).



## Apertures

Apertures are available on the 100L and 145L versions.  
All versions come with recycling graphic label.



Open



Hole

