

Installation guide

Regent 30 & 50 litre Wall mounting

LEAFIELD litter products



Cleaning Products should be rinsed with clean water and then washed with a mild detergent solution using a bristle brush or sponge. Care should be taken not to apply undue pressure that may damage labels. Flush clean with water after washing.



Quality Standards All Leaffield Environmental products are certificated to BS EN ISO



Tools Chalk, Hammer drill, 10mm masonry drill bit, Screwdriver.

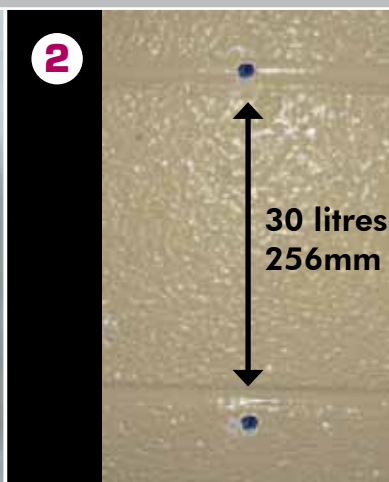


PPE Always wear appropriate PPE equipment and follow safety guidelines.

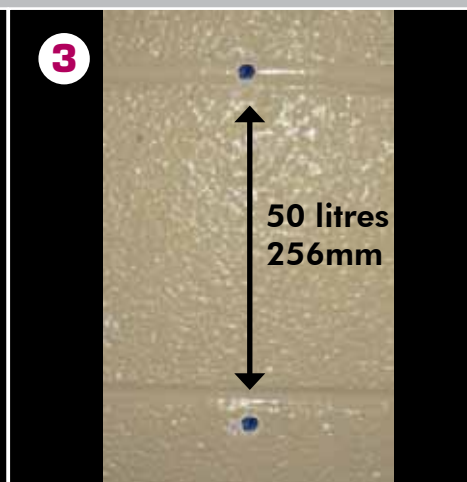
Marking out holes



Established the height you wish to mount the bin.



If you have the 30 litre bin drill 2 x 10mm holes one vertically above the other 256mm apart from centre to centre.



If you have the 50 litre bin drill 2 x 10mm holes one vertically above the other 256mm apart from centre to centre.

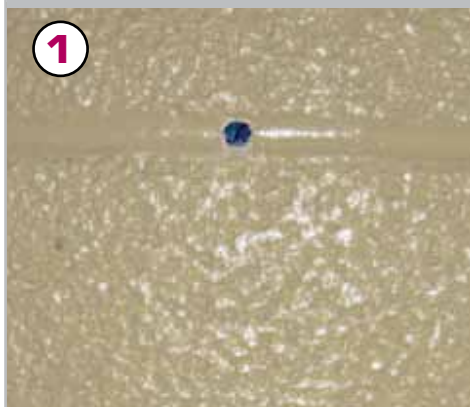
Contents:



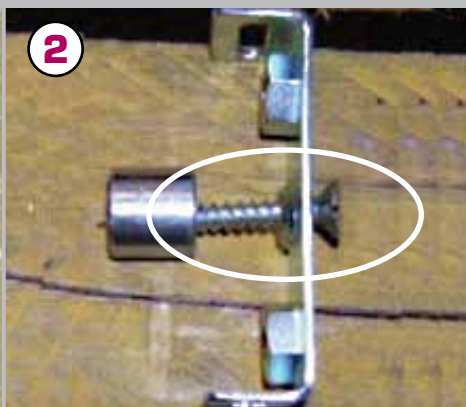
From left to right:

- 2 x hole plugs
- 2 x metal tube spacers
- 2 x wood screws
- 2 x 'U' bracket
- 2 x backing plate
- 4 x 8mm machine screws

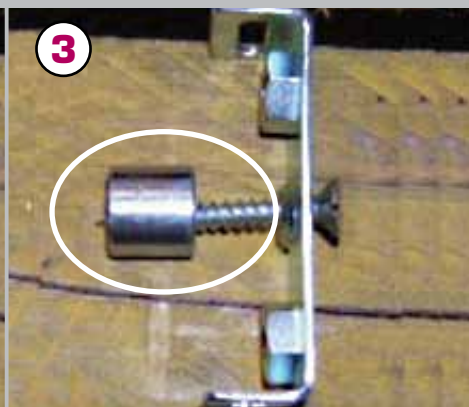
Plugging holes and assembling brackets



Now add 1 x hole plug to each wall hole.



Insert wood screw through the centre hole of the 'U' bracket.



Place the metal spacer tube over the end of the screw as shown.

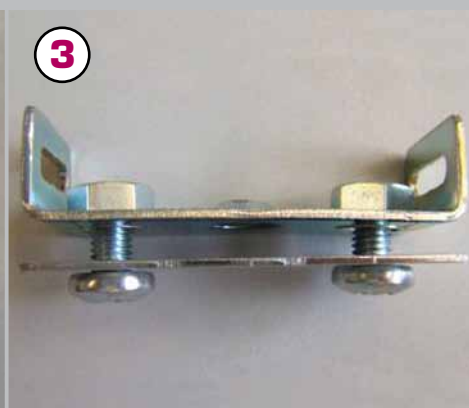
Affixing to wall



Screw the bracket and spacer into the wall holes, repeat for second bracket.



Locate the flat metal plates x 2 and the 8mm machine screws x 4.



This is how the set-up would look without the regent bin body in the middle.

Screwing bin to wall



Lift the bin into position lining up with the 'U' bracket on the wall.



Position up the metal plate and screw in the machine screws lightly repeat for both brackets.



When all four screws are in place tighten fully.



Post
Leaffield Way
Leaffield Industrial Estate
Corsham, Wiltshire
SN13 9UD



Telephone
01225 816500
Fax
01225 816501



Email
litter@leaffieldenv.com



Website
www.leaffield-environmental.com

