

# Installation guidelines

## LEAFIELD litter bins

### Hippo



**Cleaning** Products should be flushed with clean water and then washed with a mild detergent solution using a bristle brush or sponge. Care should be taken not to apply undue pressure that may damage labels. Flush clean with water after washing.

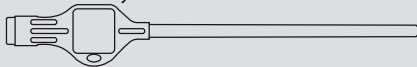


**Quality Standards** All Leafield Environmental products are certificated to BS EN ISO



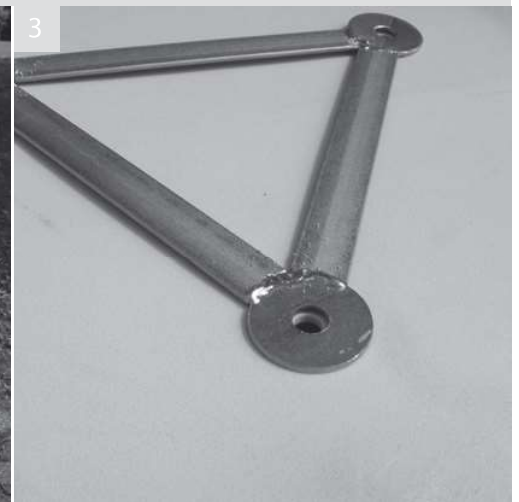
**Tools** Chalk, Hammer drill, 12mm masonry drill bit, 14mm drill bit, Mallet, 17mm spanner or socket

Key:



**PPE** Always wear appropriate PPE equipment and follow safety guidelines.

#### Drilling holes in base



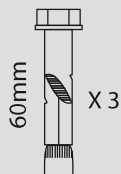
Remove hood and liner. Turn bin over and place the anchor plate in the centre of the bin base. Orientate so a point faces the bin front

Using the anchor plate as a jig, drill 14mm holes through the three anchor plate holes and through the bin body

Ensure all three holes are cleared of debris and align with the three holes in the anchor plate

Ground fixing kit additional components: Available as optional extra

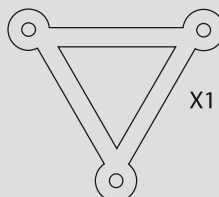
Ground fixing bolt



Washer



Anchor plate

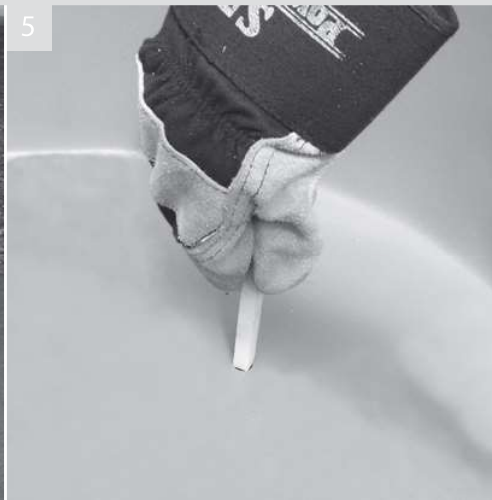


Ground fixing to asphalt is not recommended

## Marking ground fixing holes



Remove the anchor plate from the base and turn body over

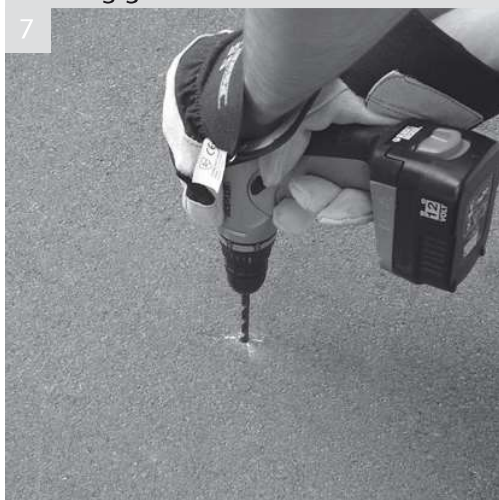


Position the body in the correct location and orientation. Mark through the holes in the base to the ground below



Remove bin body and clearly mark the ground below in the three bolt locations

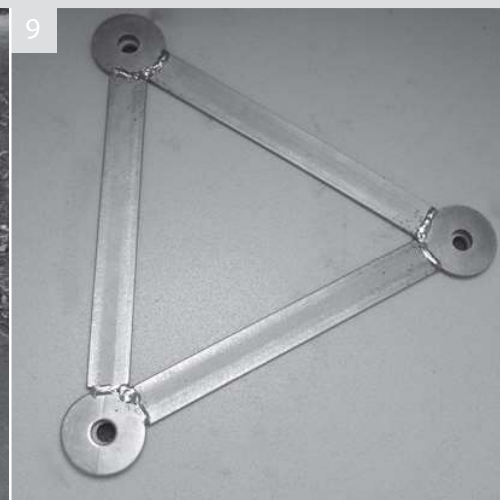
## Drilling ground holes



Drill 12mm holes in the four marked positions to a depth of 70mm to accommodate the full length of the bolts. Clear debris from holes



Replace bin locating over ground holes



Align anchor plate over holes in base and ground

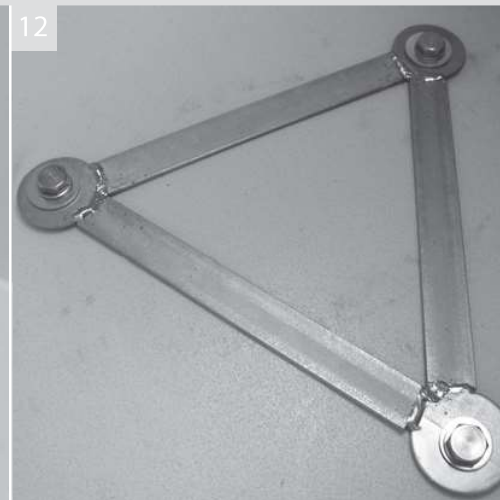
## Fastening anchor plate and bin



Put washers onto bolts. Push bolts into the three holes and drive them home with a hammer



Use a spanner or socket to tighten the bolts. Tighten to 22.0Nm torque for concrete.



Ensure all three bolts are tight and the anchor plate is secure. Replace liner and hood



post  
Leaffield Way, Leaffield Industrial Estate  
Corsham, Wiltshire SN13 9UD



telephone  
+ 44 (0)1225 816500



facsimile  
+ 44 (0)1225 816501



website/email  
www.leaffield-environmental.com  
envinfo@leaffieldenv.com

