

# Installation guide

## Centrum Forecourt

### LEAFIELD litter products



**Cleaning** Products should be rinsed with clean water and then washed with a mild detergent solution using a bristle brush or sponge. Care should be taken not to apply undue pressure that may damage labels. Flush clean with water after washing. Non heated pressure washer can be used at no closer the 400mm away from the unit. The Pressure should be no more than 100 Bar.



**Quality Standards** All Leaffield Environmental products are certified to BS EN ISO



**PPE** Always wear appropriate PPE equipment and follow safety guidelines.



**Tools** Chalk, Hammer, drill, 15mm masonry drill bit, 17mm socket or spanner, lock Key (if applicable), 25mm Spade Cutter.

### Ballast filling



From inside the bin remove the cap



Place the bin onto the floor on its back.



Feed 20kg of gravel into the ballast hole. Gravel dimension - 6.5 - 15 mm (individual partical size).



**Post**  
Leaffield Way  
Leaffield Industrial Estate  
Corsham, Wiltshire  
SN13 9UD



**Telephone**  
01225 816500  
**Fax**  
01225 816501



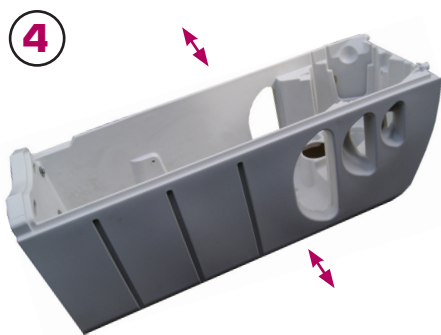
**Email**  
[litter@leaffieldenv.com](mailto:litter@leaffieldenv.com)



**Website**  
[www.leaffield-environmental.com](http://www.leaffield-environmental.com)



## Ballast filling



As the gravel collects in the mouth of the ballast filling aperture, lift the top of the unit 90 degrees allowing the gravel to slide down to the base of the unit. Repeat until full.



Stand the unit back upright.



Replace the Cap. Position the body in the required location and orientation ensuring that the unit is situated on a flat level surface.

## Marking out holes for ground fixing



Position the body in the required location and orientation ensuring that the unit is situated on a flat level surface.

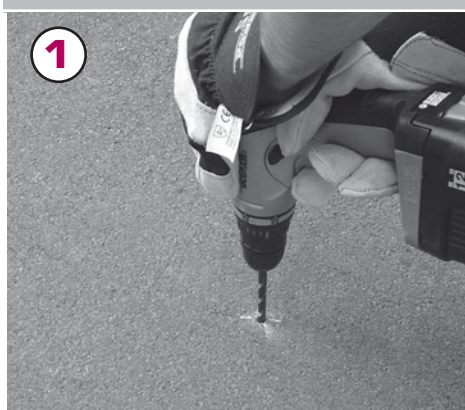


Using chalk mark the position through the four holes in the bin base onto the ground below.



Move the bin to one side and clearly mark the ground in the four hole positions with a cross.

## Drilling holes and secure into place



Drill 4 x15mm holes in the ground to a depth of 100mm to accommodate the bolt length and remove debris from holes.



Place the bin over the holes and insert the fixing bolts into each hole.



Using a 17mm spanner or socket tighten the bolts to 22.0Nm torque when fitting the unit onto a concrete surface.



**Post**  
Leafield Way  
Leafield Industrial Estate  
Corsham, Wiltshire  
SN13 9UD



**Telephone**  
01225 816500  
**Fax**  
01225 816501



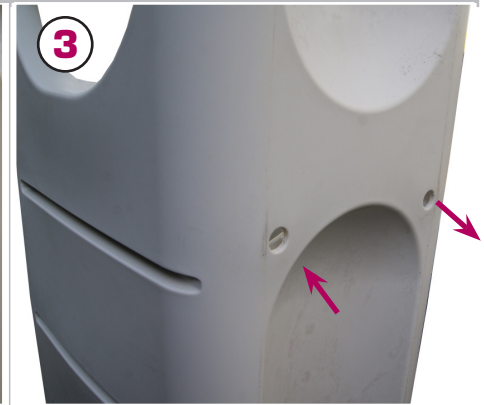
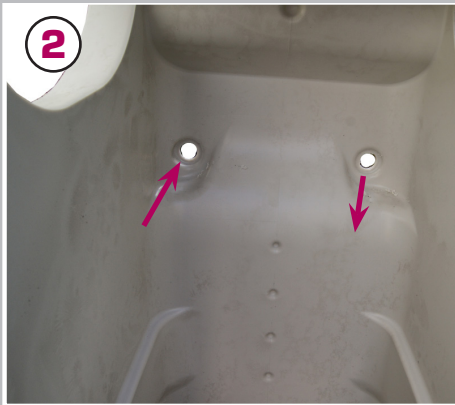
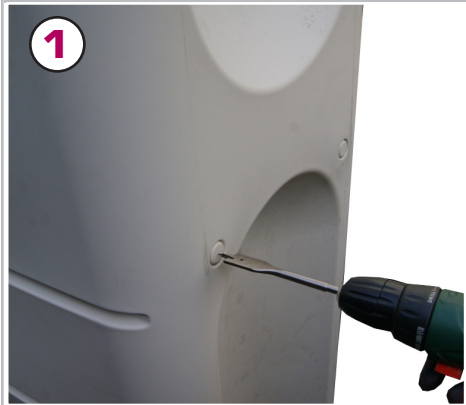
**Email**  
[litter@leafield-env.com](mailto:litter@leafield-env.com)



**Website**  
[www.leafield-environmental.com](http://www.leafield-environmental.com)



## Stanchion Fixing



If required drill out the stanchion securing holes situated at the back of the bin using a 25mm spade cutter/hole saw.

Position the body in the required location and orientation ensuring that the unit is situated on a flat level surface. Feed an appropriate fixing material from inside the bin through the holes and secure into place.



**Post**  
Leaffield Way  
Leaffield Industrial Estate  
Corsham, Wiltshire  
SN13 9UD



**Telephone**  
01225 816500  
**Fax**  
01225 816501



**Email**  
[litter@leaffield-env.com](mailto:litter@leaffield-env.com)



**Website**  
[www.leaffield-environmental.com](http://www.leaffield-environmental.com)

